

# 4130 CAHUENGA

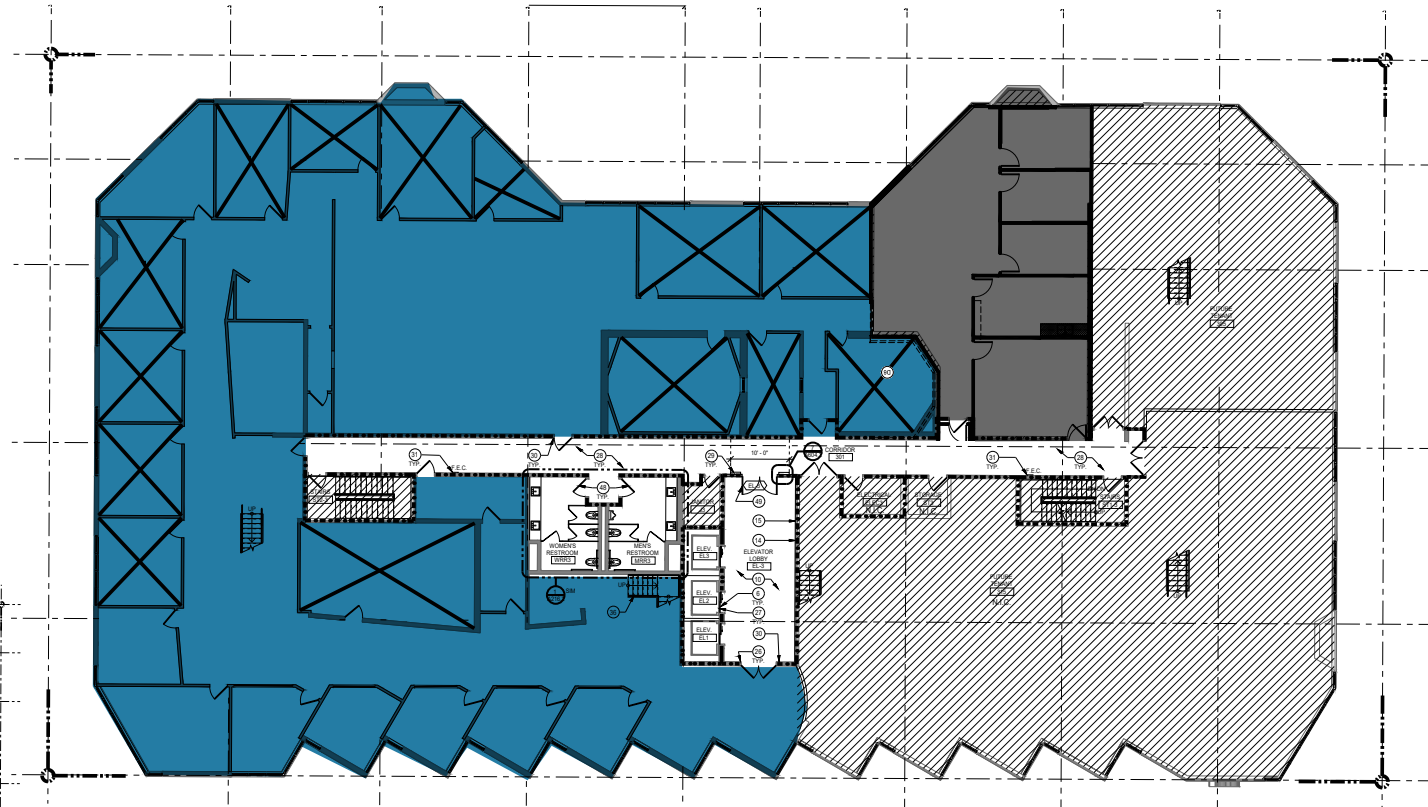
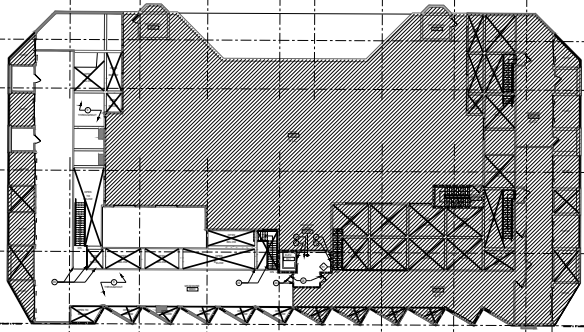
4130 CAHUENGA BLVD. TOLUCA LAKE, CA 91602

■ **SUITE 300\***  
16,708 RSF  
(INCLUDES MEZZANINE)

■ **SUITE 310\***  
2,077 RSF

\*Contiguous to 18,785 RSF

## MEZZANINE FLOOR



[CLICK FOR  
VIRTUAL TOUR  
OF SUITE 300](#)

**DOUG MARLOW**  
Executive Vice President  
Lic. 00409987  
+1 818 502 6707  
doug.marlow@cbre.com

**JULIANA SAMPSON**  
Senior Associate  
Lic. 01894878  
+1 818 502 6772  
juliana.sampson@cbre.com

© 2021 CBRE, Inc. All rights reserved. This information has been obtained from sources believed reliable, but has not been verified for accuracy or completeness. You should conduct a careful, independent investigation of the property and verify all information. Any reliance on this information is solely at your own risk. CBRE and the CBRE logo are service marks of CBRE, Inc. All other marks displayed on this document are the property of their respective owners, and the use of such logos does not imply any affiliation with or endorsement of CBRE.